

User Manual

Troubleshooting

- ⚠ NO DATA
 - There is no Master unit inserted in Master pocket (⑥) when DATA COPY is under process. Please insert your Master unit in Master pocket (⑥).
- ◆ Charging indicator (③) continuously flashes in red.
 - Non-rechargeable batteries are inserted in units. Replace batteries.
 - No batteries are inserted in units. Insert compatible batteries.
 - Batteries inside are potentially defective. Change your batteries.
- ◆ Channel-sync indicator (③) continuously flashes in red.
 - The charging contacts between units and the charger are not connected. Take units out and replace them in the charger again.
 - Potential incompatible channel configuration between units and the charger. Ensure channel configuration on units and the charger are same.
- ◆ Data-copy indicator (③) continuously flashes in red.
 - The charging contacts between units and the charger are not connected. Take units out and replace them in the charger again.
 - Transmitters and receivers are mixed and incorrectly inserted in the charger. Make sure all units in the chargers are of same model (only transmitters or only receivers)
 - Potential defects on unit(s). Contact your dealer or Contacta Technical Support.

Specifications

Charging pockets	24
Charging current	350 ± 50 mA, per pocket
Charging time	4 ~ 6 hours @ 2,100 mAh Ni-MH rechargeable batteries
Charging algorithm	PWM control, -ΔV and TIMER power-off detector
Power requirements	AC 100 ~ 240 V switching power adapter DC 12 V, 5 A
Ambient temperature	0 °C ~ 40 °C (32 ° F - 104 ° F)
Dimensions (D x W x H)	Charger Case:437 x 266 x 170 mm/17.21 x 10.47 x 6.7 in
Weight	Charger Unit with Charger Case: 4.69 kgs/10.34 lbs

Specifications are subject to change without prior notice.

This device complies with part 15 of the FCC Rules. Operation is subject to the following two conditions: (1) This device may not cause harmful interference, and (2) this device must accept any interference received, including interference that may cause undesired operation.

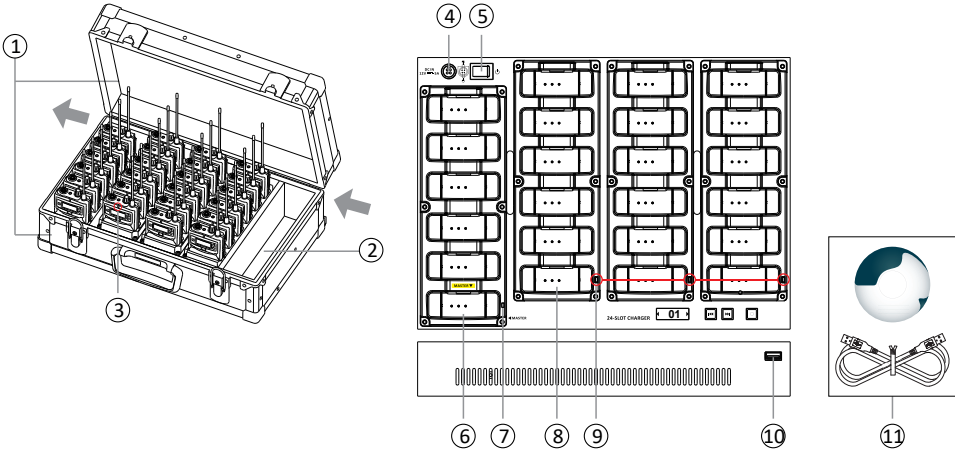
Notice:
The changes or modifications not expressly approved by the party responsible for compliance could void the user's authority to operate the equipment.

FCC INFORMATION
The Federal Communication Commission Radio Frequency Interference Statement includes the following paragraph:
The equipment has been tested and found to comply with the limits for a Class B Digital Device, pursuant to part 15 of the FCC Rules. These limits are designed to provide reasonable protection against harmful interference in a residential installation. This equipment generates, uses and can radiate radio frequency energy and, if not installed and used in accordance with the instruction, may cause harmful interference to radio communication.
However, there is no guarantee that interference will not occur in a particular installation. If this equipment does cause harmful interference to radio or television reception, which can be determined by turning the equipment off and on, the user is encouraged to try to correct the interference by one or more of the following measures:
-- Reorient or relocate the receiving antenna.
-- Increase the separation between the equipment and receiver.
-- Connect the equipment into an outlet on a circuit different from that to which the receiver is connected.
-- Consult the dealer or an experienced radio/TV technician for help.



Version:9552-028-D2-0124

Illustration



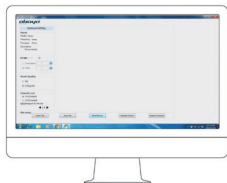
- ① Detachable suitcase
 - Slide left to detach the top case
- ② Accessory storage
- ③ Charging / Channel-Sync / Data-Copy indicator:
 - Steady red: Charging
 - Steady green: Fully charged
 - Flashing blue: In the process of channel-sync or data-copy
 - Flashing red: Potential errors happen (see details in the paragraph of Troubleshooting)
- ④ DC input
 - To connect with supplied switching power adapter (DC 12 V, 5 A)
- ⑤ Power switch
- ⑥ Master pocket
 - Master unit is inserted here for charging, channel-sync and data-copy
- ⚠ Before channel-sync, make sure both charger and all units share same channel configuration.
- ⑦ Standby indicator of Master pocket
 - Steady blue: The pocket row is ready for charging, channel-sync and data-copy
 - Steady red: Master pocket (⑥) is at DATA COPY mode
 - No LED: The pocket row is potentially defective
- ⑧ Slave pockets
 - Slave units are inserted for charging, channel-sync and data-copy
- ⑨ Standby indicator of Slave pockets
 - Steady blue: The pocket row is ready for charging, channel-sync and data-copy
 - No LED: The pocket row is potentially defective
- ⑩ Handheld microphone charging port
 - This port is additionally used for charging handheld microphone via supplied programming / charging cable (⑪). Only charge RF-TXHH using YSB port if RF-TXHH has rechargeable batteries inserted (not provided).
- ⑪ Proprietary software pack (programming / charging cable incl.)

User Manual

■ Programming before operation

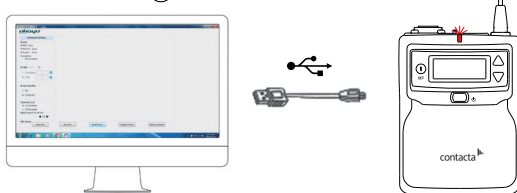
◆ Step 1.

Install proprietary software OK-CON-SW (see instruction manual in software pack additionally) on your PC and open it.



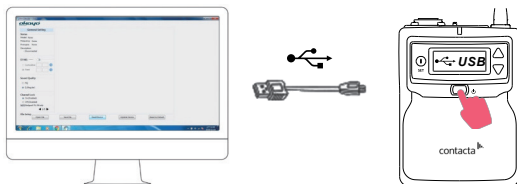
◆ Step 2.

Connect Master unit (transmitter or receiver) with your PC via supplied programming cable (⑪) LED indicator (③) on Master unit flashes in red.



◆ Step 3.

Short press the button and screen shows up on Master unit (transmitter or receiver).

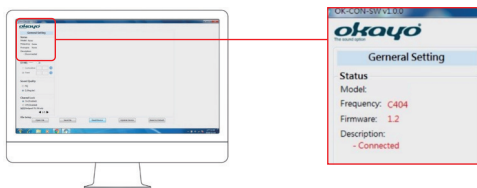


Press and hold the button for more than 1 second, the unit will be turned on automatically and display the standby screen as shown below. Now, the PC connection is regarded as its power supply.



◆ Step 4.

Proprietary software **OK-CON-SW** shows the status of connected Master unit (transmitter or receiver). Now, you are ready to program it.



②

■ Operation

◆ Power on

- Connect supplied power adapter with DC input jack (④) and switch power on (⑤).

◆ Prior programming (data-copy)

- Insert Master unit in Master pocket (⑥) and slave units in Slave pockets (⑧).
- Press button to enter programming mode and standby indicator (⑦) on Master pocket (⑥) will turn from steady blue to steady red.
- Press button to start the programming when will show up on the screen.
- During programming, data-copy indicator (③) on all units will continuously be flashing for 10 seconds and then finish.



Before channel-sync, make sure both charger and all units share same channel configuration.



Only same model (transmitter or receiver) can be programmed simultaneously in same charger. No interchangeable models are allowed here.



All settings and channel configuration, except ID number (ex. C404), on Master unit can be copied to all slave units.

◆ Channel-sync

- After prior programming (data-copy) is completed, press button or to select mode and then press button to enter channel-sync mode.
- Pre-defined channel number or channel name shows up. Press button or and then to select and confirm newly selected channel.
- During channel-sync, will show up and channel-sync indicator (③) on all units will continuously be flashing for 10 seconds and will then finish.
- When channel-sync is completed, the screen will be back to last screen (or).
- To leave this mode, press buttons and simultaneously for 1 second. You will return back to home screen for mode selection again.



Channel-sync will only work successfully when transmitters / receivers are on:

- Same frequency code
- Same channel configuration
- Same sound quality (Q / HQ)

◆ Reset to default settings:

- Firstly, follow one of two operations below to have your Master unit to be "Returned to default".
 - Press and hold, three (3) buttons , and simultaneously on your Master unit.
 - Connect your Master unit with your PC and click the option "reset to default" on the proprietary software OK-CON-SW.
- Now, insert this Master unit in Master pocket (⑥) and proceed to have all slave units to be reset to default settings.

③