



contacta 




# Security Solutions

Ensure the transfer and storage of your valuable  
items in a safe and secure way



# Contents

|  | Section                  | Page |
|--|--------------------------|------|
|  | Security Solutions       |      |
|  | Introduction             | 3    |
|  | Bulk Transfer Units      | 4    |
|  | Audio Vision Panels      | 6    |
|  | Letterboxes/Receipt Bins | 8    |
|  | Secure Pedestals         | 10   |
|  | Cash Drawer              | 12   |
|  | Pass Through Trays       | 13   |
|  | Shotbox                  | 15   |
|  | Deposit Boxes            | 16   |

**Note:** Contacta has a policy of continuous product development. Therefore, small specification changes may not be reflected in this catalogue. Images, labels, packaging, accessories and product colours are subject to change without notice.

## Stay safe and secure in your business

The secure transfer and storage of objects is a necessity for the smooth running of business in any organisation working with cash and documents.

## Our innovative solutions

We provide a range of pedestal safes, letterboxes and deposit units to provide you with a number of solutions to suit your business needs.

With **over 40 years' experience** creating quality systems across the UK, we have produced an innovative range of secure solutions tailored to meet your needs.



# Manual Bulk Transfer Unit

This through-the-wall unit is designed for the transfer of packages or bulk cash, between a non-secure and secure area.

## Applications:

It is suitable for a wide variety of "through wall" applications where security is a priority, including:

- Banks
- Prisons
- Government Offices
- Cash Offices

## Features:

- The unit is mechanically operated via a side lever to control the interlocking doors
- Interlocking doors ensure that internal and external doors cannot both be opened at the same time
- A dual sliding shelf that allows the user to access the contents from both sides
- The unit comes complete with a leg frame for support
- Designed and tested to meet ballistic attack in accordance with EN 1522/1523 FB4 & FSG

## Physical Data:

|              |   |
|--------------|---|
| Dimensions   | External Dimensions –<br>Width – 538mm (21.18")<br>Height – 440mm (17.32")<br>Depth – 630mm (24.80")<br><br>Internal Dimensions –<br>Width – 380mm (14.96")<br>Height – 236mm (9.29")<br>Depth – 560mm (22.05") |
| Weight       | 72kg (158.73lbs)  |
| Construction | Mild Steel  |
| Finish       | Powder Coated RAL 9001  |
|              | Powder Coated RAL 7037 Leatherette  |

## Product Codes:

|                                    |               |
|------------------------------------|---------------|
| Manual Bulk Transfer Unit in Grey  | BTU-MAN-G-DSF |
| Manual Bulk Transfer Unit in Cream | BTU-MAN-C-DSF |



## Combined BTU & Deposit Unit

This through-the-wall unit combines a chamber for the secure transfer of bulk cash, coinage or other valuables, with a separate quick deposit enclosure.

### Applications:

It is suitable for a wide variety of “through wall” applications where security is a priority, including:

- Banks
- Prisons
- Government Offices
- Cash Offices

### Features:

- Electronic controls for ease of use
- Interlocking doors ensure that only one door can be opened at any one time
- A quick deposit facility, enabling fast and efficient secure deposits within busy environments
- Combined trolley/support stand for easy manoeuvrability

### Physical Data:

|              |   |
|--------------|---|
| Dimensions   | Width – 598mm (23.54")<br>Height – 816mm (32.13")<br>Depth – 865mm (34.06") |
| Weight       | 200kg (440.93lbs)   |
| Construction | Mild Steel  |
|              | Stainless Steel   |
| Finish       | Powder Coated RAL 9006  |

### Technical Data:

|            |  |
|------------|--|
| Electrical | 12v DC operating system with backup battery. Requires a 13amp switched socket outlet for mains |
|------------|--|

### Product Code:

|                             |                 |
|-----------------------------|-----------------|
| Combined BTU & Deposit Unit | EBTU-DEP-245173 |
|-----------------------------|-----------------|



# Square Audio Vision Panel

This secure vision panel has a built-in electronic speech system and call button to enable communication between secure and non-secure areas. The aperture system in the front panel is for the transfer of small items (such as transaction slips).

The panel is fitted with a privacy screen to the rear which, when closed, prevents through-vision to the secure area when not in use.

## Applications:

Enables audio and visual communication between secure and public areas, such as:

- Banks
- Prisons
- Government Offices
- Cash Offices

## Features:

- Ideal for use above a Bulk Transfer Unit (see pages 4-5)

## Physical Data:

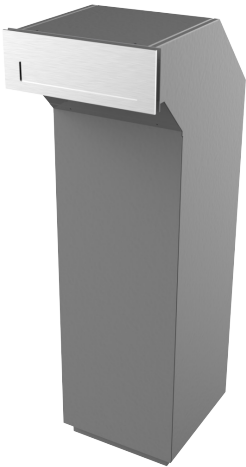
|              |   |
|--------------|---|
| Dimensions   | Width – 500mm (19.69")<br>Height – 500mm (19.69")<br>Depth – 117mm (4.61")      |
|              | Fitting aperture required:<br>Width – 454mm (17.87")<br>Height – 454mm (17.87") |
| Weight       | 25kg (55.12lbs)   |
| Construction | Mild Steel  |
| Finish       | Powder Coated BS 10 B15   |
|              | Powder Coated RAL 7037 Leatherette  |

## Technical Data:

|            |   |
|------------|---|
| Electrical | Requires a 240v 13amp supply via a switched socket outlet within 1m of unit |
|------------|---|

## Product Codes:

|                                    |                |
|------------------------------------|----------------|
| Square Audio Vision Panel in Cream | AVP-500-SQUARE |
| Square Audio Vision Panel in Grey  | AVP-500-02     |



## Through Wall/Glass Letterbox

This through-the-wall unit combines a chamber for the secure transfer of bulk cash, coinage or other valuables, with a separate quick deposit enclosure.

### Physical Data:

|                           |   |
|---------------------------|---|
| Dimensions                | Through the Wall:<br>Min:<br>Height – 1000mm (39.37")<br>Width – 300mm (11.81")<br>Depth – 440mm (17.32")<br>Max:<br>Height – 1180mm (46.46")<br>Width – 300mm (11.81")<br>Depth – 440mm (17.32") |
|                           | Through Glass:<br>Min:<br>Height – 1000mm (39.37")<br>Width – 300mm (11.81")<br>Depth – 444.5mm (17.5")<br>Max:<br>Height – 1180mm (46.46")<br>Width – 300mm (11.81")<br>Depth – 444.5mm (17.5")  |
| Weight                    | Through the Wall – 30.5kg (67.24lbs)<br>Through Glass – 30kg (66.14lbs)   |
| Installation Requirements | Wall Thickness:<br>Min – 115mm (4.53")<br>Max – 395mm (15.55")<br><br>Glass Cut Out Size:<br>Height – 80mm (3.15")<br>Length – 300mm (11.81")   |
| Construction              | Body: Mild Steel<br>Letter Plate: 316 Stainless Steel   |
| Finish                    | Body: Powder Coated BS 00 A 05<br>Letter Plate: Brushed Stainless Steel   |

### Applications:

For use in any situation where documents or goods need to be deposited securely, such as in:

- Banks
- Prisons
- Government Offices
- Cash Offices

### Customisation:

- Engraving service for company logos/branding (call us for more information)

### Product Codes:

|                         |                 |
|-------------------------|-----------------|
| Through Glass Letterbox | LBOX-GLS-HOR-01 |
| Through Wall Letterbox  | LBOX-WAL-HOR-01 |



# Portable Letterbox

This portable letterbox fits easily to the inside face of a wall or door behind an existing external letter plate. It can be emptied either in-situ via the access door or unlocked and removed to a secure area before emptying.

## Applications:

For use in any situation where documents or goods need to be deposited securely, such as in:

- Banks
- Prisons
- Government Offices
- Cash Offices

## Physical Data:

|              |   |
|--------------|---|
| Dimensions   | Height – 850mm (33.46")<br>Width – 340mm (13.39")<br>Depth – 305mm (12.01") |
| Weight       | 6.9kg (15.21lbs)  |
| Construction | Aluminium   |
| Finish       | Powder Coated BS 00 A 05  |

## Product Code:

|                    |               |
|--------------------|---------------|
| Portable Letterbox | LBOX-PORTABLE |
|--------------------|---------------|





## Receipt Bin

This receipt bin is simple yet effective. The unit is emptied via an access door to the front, which is fitted with a lock. When required, the deposit slot can be shut off to prevent use.

### Applications:

For use in any situation where it is important to deposit receipts securely, such as in:

- Banks
- Cash Offices

### Physical Data:

|              |  |
|--------------|--|
| Dimensions   | Height – 376.2mm (14.81")<br>Width – 302.4mm (11.91")<br>Depth – 150mm (5.91") |
| Weight       | 4.5kg (9.92lbs)  |
| Construction | Mild Steel   |
| Finish       | Powder Coated RAL 7012 Fine Leatherette  |

### Product Code:

|             |          |
|-------------|----------|
| Receipt Bin | SS-RB-01 |
|-------------|----------|

## Time Delay Pedestal

Our secure pedestal provides a solution to holding important documents, high value items or cash with three individual locks.

The top drawer operates with a slam lock. The middle drawer provides a secure quick deposit system for cash or important documents. When the middle drawer is closed, objects drop into the bottom drawer's secure unit.

The bottom drawer operates on a time lock mechanism and will not open until a set time, when a red light flashes and an alarm sounds.



### Applications:

For use in any situation where documents or goods need to be deposited securely, such as in:

- Banks
- Post Offices
- Prisons
- Bureaux de Change
- Cash Offices
- Government Offices

### Physical Data:

|            |   |
|------------|---|
| Dimensions | Height – 880mm (34.65")<br>Width – 376.2mm (14.8")<br>Depth – 460mm (18.1") |
| Finish     | Powder Coated RAL 9001  |

### Product Code:

|                     |            |
|---------------------|------------|
| Time Delay Pedestal | SS-PED-101 |
|---------------------|------------|

## Three Drawer Pedestal with PC Compartment

The three drawer, double skinned cashier pedestal unit has a secure, vented PC compartment, accessed via a pair of doors with a barrel bolt and deadlock for security.

All drawers are mounted on full extension runners and are locked via a single push lock.

There are four adjustable feet, provided for height adjustment and levelling.



### Applications:

For use in any situation where documents or goods need to be deposited securely, such as in:

- Banks
- Post Offices
- Prisons
- Bureaux de Change
- Cash Offices
- Government Offices

### Physical Data:

|            |   |
|------------|---|
| Dimensions | Height – 820mm (32.28")<br>Width – 520mm (20.47")<br>Depth – 655mm (25.78") |
| Finish     | Powder Coated RAL 7024 Semi-Gloss<br>Fine Leatherette                       |

### Product Code:

|                                     |            |
|-------------------------------------|------------|
| Three Drawer Pedestal with PC Comp. | SS-PED-102 |
|-------------------------------------|------------|



## Three Drawer Pedestal

The three drawer, single skinned cashier pedestal unit has an open PC compartment.

The PC compartment at the bottom of the pedestal has open access and vents to keep the compartment cool, while the top two drawers are locked with keys.

There are four adjustable feet, provided for height adjustment and levelling.

### Applications:

For use in any situation where documents or goods need to be deposited securely, such as in:

- Banks
- Bureaux de Change
- Cash Offices
- Government Offices

### Physical Data:

|            |   |
|------------|---|
| Dimensions | Height – 820mm (32.28")<br>Width – 520mm (20.47")<br>Depth – 552mm (21.73") |
| Finish     | Powder Coated RAL 7024 Semi-Gloss Fine Leatherette                          |

### Product Code:

|                       |            |
|-----------------------|------------|
| Three Drawer Pedestal | SS-PED-103 |
|-----------------------|------------|



# Light Duty Cash Drawer with Mounting Bracket

This light duty cash drawer has a robust steel casing and is designed to fit neatly under counters.

It has a pre-drilled case and mounting brackets for fast and easy installation, while the drawer can be used with various combinations of coin modules, bank note cases or coin scoops.

## Applications:

Provides efficient and secure cash transactions between customers and staff, such as in:

- Banks
- Post Offices
- Bureaux de Change
- Cash Offices
- Government Offices

## Features:

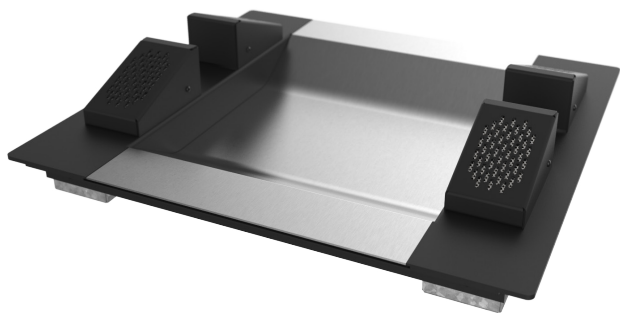
- Removable coin compartment
- Slam-lock drawer
- Heavy-duty runners

## Physical Data (excluding bracket):

|              |  |
|--------------|--|
| Dimensions   | Height - 167mm (6.57")<br>Width - 450mm (17.71")<br>Depth - 510mm (20.07") |
| Weight       | 5.5kg (12.1lbs)  |
| Construction | Mild Steel   |
| Finish       | Light Grey Steel Casing  |

## Product Codes:

|                        |               |
|------------------------|---------------|
| Light Duty Cash Drawer | SS-CCD01-COMP |
|------------------------|---------------|



# Shallow Pass Through Tray with Speech Transfer System

Our shallow pass through tray allows items to be passed between the secure and public sides of a security screen. The tray features an integrated electronic speech transfer system to allow clear communication between staff and customers.

### Applications:

Enables efficient and secure transaction of business between customers and staff where security screens are in use, such as in:

- Banks
- Prisons
- Post Offices
- Bureaux de Change
- Cash Offices
- Government Offices

### Physical Data:

|                           |   |
|---------------------------|---|
| Dimensions                | Height – 46.6mm (1.83")<br>Width – 450mm (17.72")<br>Depth – 480mm (18.90") |
|                           | Adjustment Between Pods:<br>32mm to 72mm (1.26" - 2.83")                    |
| Weight                    | 8kg (17.64lbs)  |
| Construction              | Stainless Steel   |
|                           | Mild Steel  |
| Finish                    | Black Powder Coated Fine Leatherette  |
| Installation Requirements | Overall Rebate:<br>Width – 451mm (17.76")<br>Length – 481mm (18.94")        |
|                           | Overall Cut Out:<br>Width – 406mm (15.98")<br>Length – 436mm (17.17")       |

### Technical Data:

|                         |   |
|-------------------------|---|
| Electrical Requirements | 13amp Switch Socket Outlet Within 1 Metre of Unit |
|-------------------------|---|

### Product Code:

|   |             |
|---|-------------|
| Shallow Pass Through Tray with Speech Transfer System | SS-PTU40-SS |
|---|-------------|



## Pass Through Tray with Speech Transfer System and Sliding Cursor

Our pass through tray features a sliding cursor for extra security which allows items to be passed between secure and public sides of a security screen. It features a sliding cover and an integrated speech transfer speaker and microphone system, enabling clear communication between staff and customers.

### Physical Data:

|                           |   |
|---------------------------|---|
| Dimensions                | Depth – 65mm<br>Width – 450mm<br>Length – 480mm                       |
|                           | Adjustment Between Pods:<br>32mm to 72mm (1.26" - 2.83")              |
| Weight                    | 8.5Kg (18.73lbs)  |
| Construction              | Mild Steel  |
|                           | Stainless Steel   |
|                           | Clear Polycarbonate   |
| Finish                    | Carcass – Powder Coated Black Fine Leatherette Finish                 |
|                           | Cursor – Clear Polycarbonate  |
| Installation Requirements | Overall Rebate:<br>Width – 451mm (17.76")<br>Length – 481mm (18.94")  |
|                           | Overall Cut Out:<br>Width – 406mm (15.98")<br>Length – 436mm (17.17") |

### Applications:

Enables efficient and secure transaction of business between customers and staff where security screens or barriers are in use, such as in:

- Banks
- Prisons
- Post Offices
- Bureaux de Change
- Cash Offices
- Government Offices

### Features:

- Electrical standards apply on the audio section: 55103-1 55103-2

### Technical Data:

|                         |   |
|-------------------------|---|
| Electrical Requirements | 13amp Switch Socket Outlet Within 1 Metre of Unit |
|-------------------------|---|

### Product Code:

|  |             |
|--|-------------|
| Pass Through Tray with Speech Transfer System and Sliding Cursor | SS-PTU75-SS |
|--|-------------|



# Shotbox

Our shotbox has been designed to increase protection for staff. It is ballistic attack proof when used with the Small Pass Through Tray with Sliding Cursor (see page 14), in accordance with EN 1522/1523 FB2.

## Applications:

Enhances security in businesses where high-risk transactions take place, such as in:

- Banks
- Prisons
- Post Offices
- Bureaux de Change
- Cash Offices
- Government Offices

## Compatible With:

- Small Pass Through Tray with Sliding Cursor (see page 14)

## Physical Data:

|              |  |
|--------------|--|
| Dimensions   | Height – 141mm (5.55")<br>Width – 320mm (12.60")<br>Depth – 336mm (13.23") |
| Weight       | 16kg (35.2lbs)   |
| Construction | Mild Steel   |
| Finish       | Powder Coated RAL 9006   |

## Product Code:

|         |             |
|---------|-------------|
| Shotbox | SS-PTU36-SB |
|---------|-------------|



# Front Opening Deposit Box

The internal deposit point is designed to allow access to contents via a front opening door. The unit has a stainless steel front and adjustable feet to allow the height to be altered.

## Applications:

For use in any situation where documents or goods need to be deposited securely, such as in:

- Banks
- Prisons
- Post Offices
- Bureaux de Change
- Cash Offices
- Government Offices

## Features:

- Grained stainless steel letter flap sprung to closed position
- Front door full length stainless steel hinge and dual cam locking keys
- Height adjustable feet
- Interlocking flap chute mechanism

## Customisation:

- Engraving service for security instructions and branding (call us for more information)

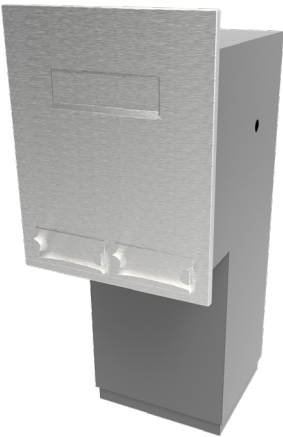
## Physical Data:

|              |   |
|--------------|---|
| Dimensions   | Height – 1375mm + 75mm adjustment<br>(54.13" + 2.95" adjustment)<br>Width – 600mm (23.62")<br>Depth – 750mm (29.52) |
| Weight       | 47kg (103.6lbs)   |
| Construction | 1.6mm Mild Steel  |
|              | Stainless Steel   |
| Finish       | RAL 9010 Powder Coated  |
|              | Brushed Stainless Steel   |

## Product Code:

|                           |            |
|---------------------------|------------|
| Front Opening Deposit Box | SS-DP-W-01 |
|---------------------------|------------|





## Rear Opening Deposit Box

The internal deposit point is designed to allow access to contents via a rear opening door. The unit has a stainless steel front and adjustable feet to allow the height to be altered.

### Applications:

For use in any situation where documents or goods need to be deposited securely, such as in:

- Banks
- Prisons
- Post Offices
- Bureaux de Change
- Cash Offices
- Government Offices

### Features:

- Grained stainless steel letter flap sprung to closed position
- Rear door full length stainless steel hinge and dual cam locking keys
- Hidden lock mechanism with anti-tamper design
- Height adjustable feet
- Interlocking flap chute mechanism

### Customisation:

- Engraving service for security instructions and branding (call us for more information)

### Physical Data:

|              |  |
|--------------|--|
| Dimensions   | Height – 1285mm + 75mm adjustment (50.59")<br>Width – 510mm (20.07")<br>Depth – 746mm (29.37") |
| Weight       | 54kg (119lbs)  |
| Construction | 2mm Mild Steel   |
|              | Stainless Steel  |
| Finish       | Powder Coated RAL 9010   |
|              | Brushed Stainless Steel  |

### Product Code:

|                          |            |
|--------------------------|------------|
| Rear Opening Deposit Box | SS-DP-W-02 |
|--------------------------|------------|







## Contact us now on:

☎ +44 (0) 1732 223900

✉ [sales@contacta.co.uk](mailto:sales@contacta.co.uk)

📠 +44 (0) 1732 223909

Contacta Systems Ltd  
Office 13, Dana Estate  
Transfesa Road  
Paddock Wood, Kent  
TN12 6UT  
United Kingdom

[www.contacta.co.uk](http://www.contacta.co.uk)